

## FIRST ANNOUNCEMENT

# HERITAGE SCIENCE AND SUSTAINABLE DEVELOPMENT FOR THE PRESERVATION OF ART AND CULTURAL ASSETS - ON THE WAY TO THE GREEN MUSEUM

### International Scientific Workshop

Date: April 11<sup>th</sup> -12<sup>th</sup>, 2013

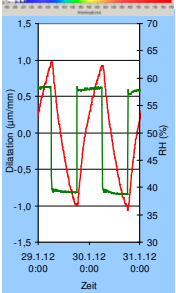
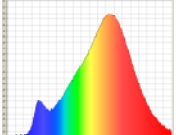
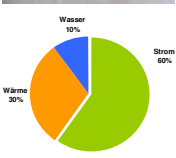
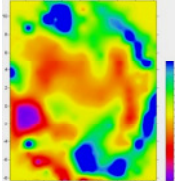
Organizer: Rathgen Research Laboratory, National Museums Berlin,  
Germany

The term "Green Museum" brings together conservation science with the sustainable development for the preservation of art and cultural heritage. This involves three closely related issues: firstly, the preservation and conservation, i.e. the widest possible extension of life expectancy for our cultural heritage; secondly, the economic and infrastructural conditions for it; and finally the ecological energy and resource issue (energy efficiency, carbon footprint). In the sustainability debate, these three aspects can only be considered and evaluated together. The 'Green Museum' is a museum that embraces the concept of sustainability in its program, its activities and its physical presence.

Here conservation science programs share a particular responsibility. An important element of sustainable development in the field of museums and monuments is preventive conservation with all its elements, including the various challenges of climate, temperature and humidity, light, pollutants etc. The professional field of conservation and conservation science (Heritage Science<sup>1</sup>) has developed continuously since the foundation of the Rathgen Research Laboratory on the April 01<sup>st</sup>, 1888 as the first museum laboratory, especially in recent decades.

Conservation research activities have to focus and need to develop modern concepts in interdisciplinary collaborations that are consistent with both the primacy of heritage conservation as well as environmental and financial

<sup>1</sup> "Heritage science is a field of endeavour that bridges the divide between the humanities and the sciences. By using and developing science to understand, manage and communicate the human story expressed through landscape, buildings and artefacts, heritage science encourages the humanities and sciences to collaborate and strengthen each other" [<http://www.english-heritage.org.uk/NHSS>]; This definition of 'Heritage Science', as proposed by the British 'National Heritage Science Strategy Steering Group', describes in an excellent way the synergetic interrelation between humanities and sciences, and it acknowledges the social importance of this domain.



desiderata. They must integrate all three dimensions of sustainability, ecology, economics and society in order to cope with the immense challenges of the future.

The international workshop, organized with the support from the German Research Foundation (DFG), shall be held on the occasion of the 125<sup>th</sup> anniversary of the Rathgen Research Laboratory. It aims at bringing together leading scientists and experts for presentations and discussions on three main topics:

*1. Understanding environments*

Adapting to and managing environments: light, climatic factors, climate change, air pollution, biocides and integrated pest management (IPM)

*2. Understanding material behavior*

Panel and canvas painting, paper and photography, modern materials incl. time-based media, wood, porous building materials, mural painting, metal, glass, textile, mixed media, composites and conservation materials in response to environmental factors

*3 The economic and ecologic dimension*

Sustainability as key concept, re-evaluation of best-practices, tourism impact, capacity and capability, emergency and theft response

Registration to the conference, with or without active contribution is encouraged. The registration fee is 150 €, students rate 30 €. The fee covers information materials, assistance to the sessions and coffee breaks. After February 15<sup>th</sup>, 2013, the registration fee will be 200 € (students 50 €). As seats are limited, book soon to guarantee a place and catch the early bird rate. Deadline for paper or poster proposals is January 15<sup>th</sup>, 2013. Detailed application procedures and further deadlines will be announced shortly.

Information: Sonja Tesche  
[s.tesche@smb.spk-berlin.de](mailto:s.tesche@smb.spk-berlin.de)  
 Fax +49-(0)30 26642 7110  
 Phone +49 (0)30 26642 7100

Website: [www.smb.museum/rf](http://www.smb.museum/rf)

or follow [this link](#) to the events of the Rathgen Research Laboratory